



ELISHA'S HOME AND MINISTRIES

11 Klimas Rd. Montrose, Pa. 18801

www.elishashome.com

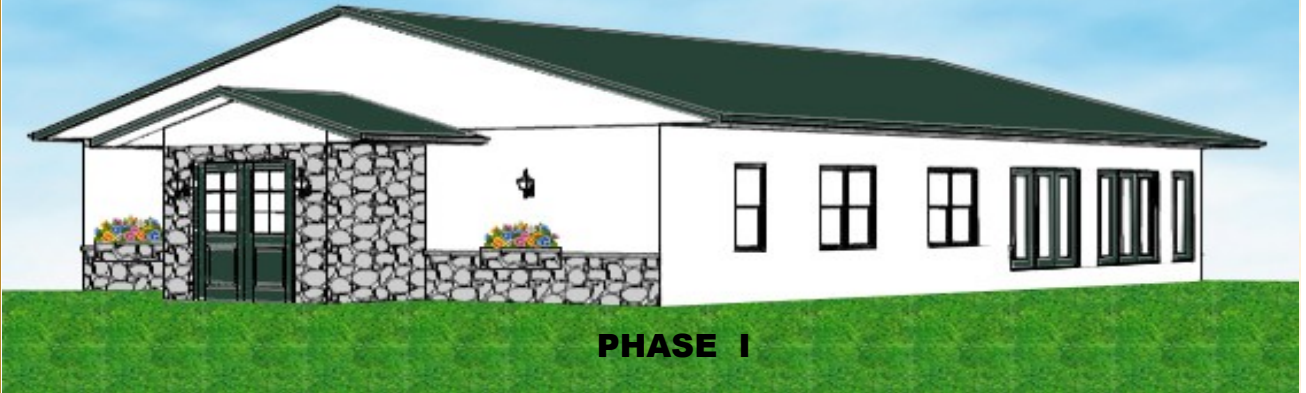
570-278-5078

M
I
N
S
T
R
Y

O
F

H
E
L
P
S

MOVING FORWARD IN 2013



PHASE I

In October 31, 1996, we moved to Montrose, Pennsylvania with a vision and a prayer. We have been faithful to serve God over the last sixteen years; we initially began having church services at a drug rehabilitation ministry; then in the multi-purpose addition of our home, to the outdoor Tabernacle - weather permitting. Our hearts' desire is to be permanently in the Tabernacle year round for our worship services; thus, this year is the season for us to enclose the Tabernacle as you see in Phase I (above).

We have obtained all the permits for a septic system, a requirement for Phase II, which was required by officials to proceed with Phase I. We now can begin to enclose the Tabernacle for permanent occupancy. We praise God for His hand of favor extended during the initial stage - preparation and counting the cost. At the present time we are believing by faith for God to provide all the finances to finish Phase I (above).

We will then tear down the old garage/maintenance shop, which will be replaced and relocated at the edge of the lower parking area. Phase II will be an extension of the Tabernacle, which will include a fellowship hall with kitchen, Sunday school rooms and bathrooms. This extension will service as our community outreach building as well. At present, we have one - third of the needed funding to enclose the Tabernacle and will proceed in faith as God provides. Many of you remember when we purchased the thirty - one acre farm by faith, with a seven and half year history of having an income of \$75.00 monthly missionary stipend each; we supernaturally acquired the mortgage. The first church services held here on the premises, were held in our small dining room, which held maybe twenty-five people. We prayed and by faith built the large multi- purpose room we presently meet in over the winter, which can hold comfortably sixty-five people. We prayed and by faith built the outdoor Tabernacle, which we worship in during the spring and summer months. The Tabernacle can hold one hundred and fifty people and has hosted our annual Field's of Grace Event.

Today, we feel a need to have a permanent Tabernacle for growth and equipping the saints; Phase I will complete that. Our mission has always been community outreach - the ministry of helps. Phase II (below) will complete this dream of dreams and enable us to accommodate three hundred people. We will then be able to conduct year round teaching seminars also. Please stand with us in prayer; watch and see God provide by faith the building to fulfill His calling for this ministry and community outreach. If you feel led to help in any way, fill free to contact us.



PHASE II



ELISHA'S HOME AND MINISTRIES

11 Klimas Rd. Montrose, Pa. 18801
570-278-5078

www.elishashome.com

M
I
N
I
S
T
R
Y
O
F
H
E
L
P
S

Field's Of Grace 2013

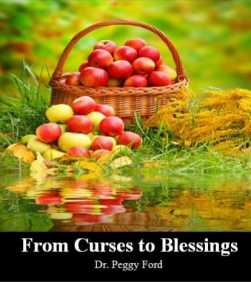


Field's Of Grace is scheduled for September 20- 21-22, 2013. Come experience a great move of God, and hear Dr. Gary Wood deliver timely messages for today on Friday evening at seven, Saturday afternoon at four, and Sunday morning at ten. Enjoy a Saturday filled with good food, live music, tour barn, and various games for all ages of the family. The Christian Motor -cycle group will have their bike blessings and bike games. Plan to spend the entire weekend with us. For those who love to camp,

we have plenty of fields for campers; if camping is not your forte, there are motels locally as well. One of our first time visitors said, *"Fields of Grace was an awesome weekend where we saw the Holy Spirit move. The people were all so friendly and full of the love of Jesus; and, as I had been warned, the chicken was amazing!"*



**The Apple Doesn't Fall
Far From the Tree**



From Curses to Blessings
Dr. Peggy Ford

New Books Coming Soon:

The Apple Doesn't Fall Far From the Tree

In our contemporary society, we have lost the value of the knowledge of our family histories – generational blessings and curses, which affect our daily lives. Many of us are unaware of the curses we have inherited; thus, we pass them on. As we identify and renounce generational curses, we must also recognize the extreme potential of our generational blessings; we must explore the possibilities of our giftings and callings, as we experience the effects of our ancestor's faith. We will express the presence of these blessings as they bear fruit of the Spirit.

Reflections

Life is a composite of distinct seasons earmarked by lessons of faith. The founders of Elisha's Home have written this book as a testament of praise to our heavenly Father for the wonderful things He has done in our lives: how He saved and delivered each of us; how He orchestrated our daily lives so that our lives would intersect; how He called each of us; how He has prospered the work to testify of His faithfulness, goodness, and grace.

